

 Georgia

From the Past to the Future

BY THE 'IRON WAY'



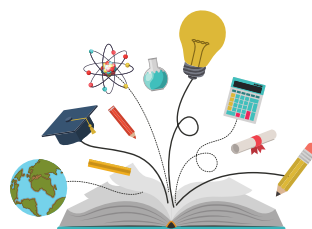


Project Objectives

Our goal is for Railway Transport College students to deepen and share knowledge about railway history, understand significant events from the founding of railways to the present, and familiarize themselves with historically significant railway objects.

Main Project aims:

- Deepening historical knowledge
- Preserving cultural heritage
- Promoting active citizenship
- Implementing sustainable development principles



Educational Direction

The project promotes the popularization of professional education and ensures:

- Development of literacy competencies
- Promoting the development of key competencies in the target group
- Strengthening digital competencies
- Raising cultural awareness

Travel Routes and Locations

First Phase



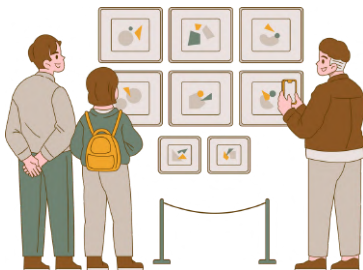
01 Poti Railway Station

One of Georgia's most important transport and logistics hubs, connecting the country to the international transport network. An educational event was held here about the relationship between Poti Port and railways.



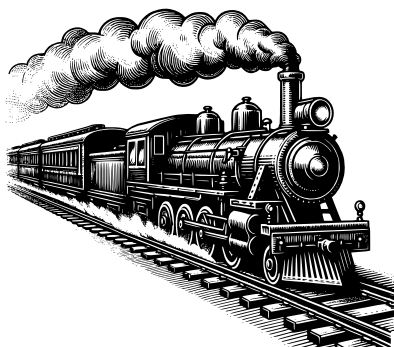
02 Samtredia Public School #1

Samtredia - one of Georgia's most important railway junctions. At the school, we presented "Georgia's Railway Past, Present and Future," conducted sports activities and environmental campaigns - planted evergreen trees.



03 Niko Nikoladze House-Museum (Didi Jikhaishi)

Students learned in detail about Niko Nikoladze's invaluable contribution to railway development. An interactive discussion was held where professional students connected historical knowledge with contemporary reality.



04 Historic First Steam Locomotive (Shorapani)

A unique historical exhibit. Students received information about the steam locomotive's technical characteristics, operating principles and historical significance, discovering connections between past technologies and modern railway systems.

Travel Routes and Locations



05 Shorapani Public School

We presented a comprehensive presentation on the historical development of the railway industry, modern technologies and career opportunities. We conducted a greening campaign - planted perennial plants on the school territory.



06 Akaki Tsereteli House-Museum (Skhvitori)

A presentation was given about Akaki Tsereteli's contributions to railway foundation and development. Students learned about the poet's publicist and social activities related to the country's industrial and transport development.



Travel Routes and Locations

Second Phase



Khashuri Public School #1

We presented about railway past, present and future. Sports and educational activities were held, along with greening campaigns. The meeting was conducted in Q&A format, with special attention to promoting professional education.

Khashuri Local History Museum

Students learned about archaeological, historical and cultural heritage exhibits, as well as Niko Pirosmani's life events, his connections with railways and photographic materials.



Khashuri Railway Station;

Tsipi Tunnel

Khashuri station is one of the important transport hubs connecting western and eastern railways. At Tsipe tunnel, discussions were held about its significance, construction, strategic purpose and railway development.





Travel Routes and Locations Third Phase

Akhalkalaki Railway Station



The closing event was held at Akhalkalaki Railway Station. The event was attended by representatives of various organizations, college students, and pupils from Kotelii Public School of Akhalkalaki Municipality. The pupils spoke in a panel discussion about the role and significance of the railway for Akhalkalaki, as well as the future of railways in Georgia.

"Time Capsule" - Message for 2035



The event concluded with a special activity called "Time Capsule," where participants wrote their vision and wishes for the railway by 2035. The event ended with a group photo session, the release of helium balloons, and fireworks.



Significance of Cultural Heritage

These visits gave students the opportunity to better understand the great importance of Georgian cultural and intellectual heritage in railway industry development. All museum staff highly praised the project idea and expressed desire for future cooperation.



Environmental Initiatives

Within the project framework, we implemented significant environmental activities:

- Cleaning areas adjacent to railways
- Tree planting and greening work
- Raising environmental awareness
- Implementing sustainable development principles.



Partnership

The project was implemented with active participation of partner schools:

- Samtredia Public School #1
- Khashuri Public School #1
- Zaza Peradze Zestaponi Municipality Shorapani Village Public School
- Tamaz Melikidze Akhalkalaki Municipality Kotelashvili Village Public School

This collaboration helped share experiences and sparked interest in the railway sector among the younger generation.



Vocational Student Evaluations



Mariam Choladze

Vocational Student

“I am particularly excited about the project "Georgia: From the Past to the Future by the 'Iron Way'," which gave me the opportunity to understand even more deeply the importance of the railway industry. Through this project, I truly felt that railways are an integral part of Georgia's past, present and future.”



Iuri Kokhodze

Vocational Student

“This project gave me a unique opportunity to see the historical significance of our country's railway industry and modern technological achievements. Most impressive were the regional visits, where I saw how railways unite people and cultures from different regions.”



Barbare Todua

Vocational Student

Excursions, seminars and practical activities helped me see how important regional cooperation is for railway industry development. Today I understand better the importance of the railway industry and see my future more clearly.



Historical Figures



Niko Nikoladze

A distinguished social activist, engineer and economist who played a huge role in Georgia's railway development. At the museum, students learned in detail about Nikoladze's invaluable contributions and his other achievements.

Akaki Tsereteli

A great publicist and social activist whose social activities concerned the country's industrial and transport development. At the museum, special attention was paid to his progressive ideas about railway construction and development.

Niko Pirosmani

A naive artist whose life and work were closely connected to railways. At Khashuri Museum, students learned about Pirosmani's life and saw how the artist reflected railway-related life in his works.



სარკინიგზო
ტრანსპორტის
კოლეჯი



პროფესიული
უნარების
სააგენტო

NNLE Railway Transport College

With support from NNLE Skills Agency Georgia

! Tbilisi, Temka Settlement. XI District. III Block. Plot 01/10

☎ +995 595 55 45 24

✉ info.rtc2016@gmail.com

© 2025 Railway Transport College. All rights reserved.